

Planetary gear

IMS.1000 Drive LN

Our planetary gear from the Drive Series is customized for the special requirements of wheel drives. Due to its helical gearing it also meets increased demands on low noise performance.



Low Noise (LN)

Due to the use of helical gearing in the first stage particularly low noise.



Maximum Power Density

Little space and great performance - with our Drive Series this is no contradiction..



Long Service Life

Persistent and reliable: planetary gears that keep their promises.



Compact Overall Length

No space? No problem! The compact design of our Drive Series makes it possible.

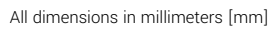


Temperature

Also ideally suited for demanding temperature ranges from -30° to +60°C.



Parameter	2-stage	Notes
Reduction ratios	28:1	Other ratios available on request
	34:1	
	45:1	
	58:1	
Nominal Output Torque	55 Nm	
Acceleration Torque	100 Nm	Time part 20 % during gearbox lifetime
Emergency Stop Torque	250 Nm	max. 50,000 cycles during gearbox lifetime
Recommended wheel-Ø	200 mm	Specification point of data sheet is wheel-Ø200mm
Radial load capacity per drive	450 kg	Weight to be moved max. 1000 kg per drive
Axial load per drive	1900 N	Time part 30 % during gearbox lifetime
Nominal speed of vehicle	1,5 m/s	Specification point of data sheet is wheel-Ø200mm
Recomm. nominal initial speed	3,000 1/min	
Max. initial speed	5,000 1/min	
Protection class	IP54	Higher protection classes available on request
Weight	10 kg	



© IMS Gear SE & Co. KGaA | 07/2022 | Subject to change.